



# SIKA AT WORK

## CAIRO METRO LINE 3 PHASE 4 A, CAIRO, EGYPT

TILING SYSTEMS

BUILDING TRUST



# CAIRO METRO LINE 3 PHASE 4 A

## PROJECT DESCRIPTION

Cairo Metro Line 3, Phase 4 is a main line of the Cairo Metro mass transit system in Greater Cairo, Egypt.

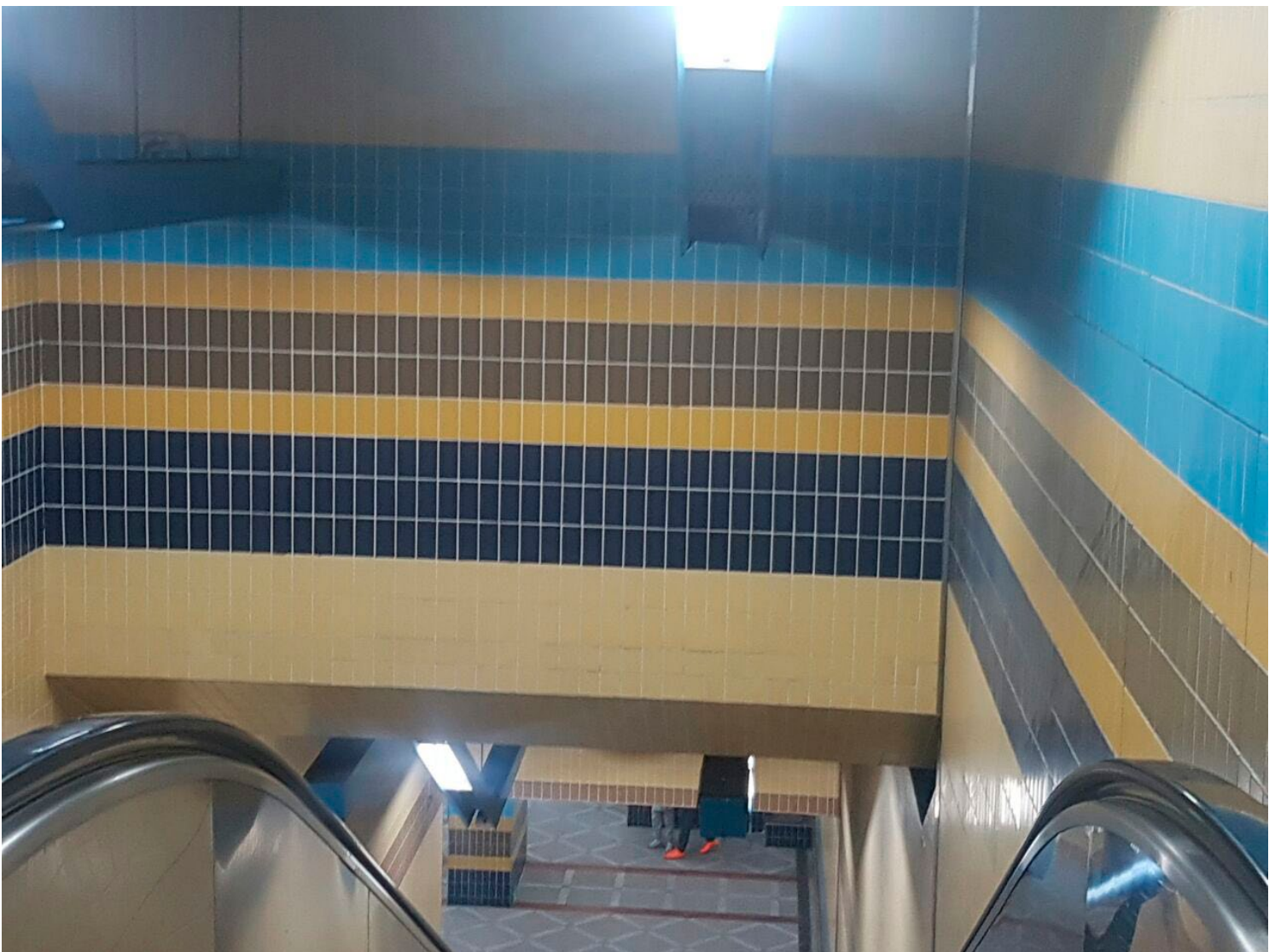
Phase 4-A is the phase that links the CBD area with Abbasia area.

- It starts at the Attaba area and terminates at Abbasia area.
- This section provides the necessary passenger interchange facility with Metro Line 2 at Attaba Station and also allows Attaba Station to operate as a temporary terminal station.
- It is about 4.2 km length and includes fire stations.
- The whole length will be underground (tunnel).
- Sidings and maintenance facilities at Attaba are also being built in this phase, with a connecting link to the main line, serving Phase 1 and Phase 2.

## PROJECT REQUIREMENTS

It was decided to clad all of the walls inside the Metro Stations with ceramic tiles of small to medium sizes, which therefore leads to a lot of joints. These had to be filled with a suitable high performance tile grout that was in accordance with EN 12004 C1 bond strength, and also importantly, it required a very good aesthetic aspect.

This is an Egyptian National Pride project and there are a lot of Ceramic Wall Tableaus to reflect the location or/and the name of the underground stations. Therefore the owners and their engineers wanted durable, easily applied materials, with consistent color to help the tiling craftsmen to execute the desirable artistic tableaus for the future.



### SIKA SOLUTION

**SikaCeram®-100** is a single component, ready to use powder tile adhesive, combining cement with selected grades of silica sand and several admixtures, which only requires the addition of water. It is ideal for all type of normal and high absorption ceramic tiles, natural stone and reconstituted stone tiles, in both small and medium sizes

**Sika® Tile Grout®** is a fine powder tile adhesive, which only requires the addition of water to produce a smooth paste that is excellent for grouting ceramic tiles and similar applications. It contains selected hydraulic and organic binders, water-proofing admixtures and graded inert hard aggregates. It is available in 6 different colors to meet architectural and design requirements.

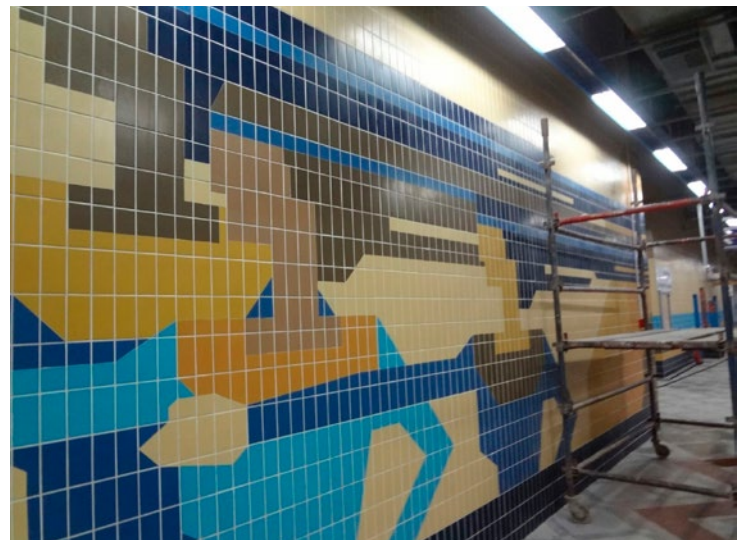
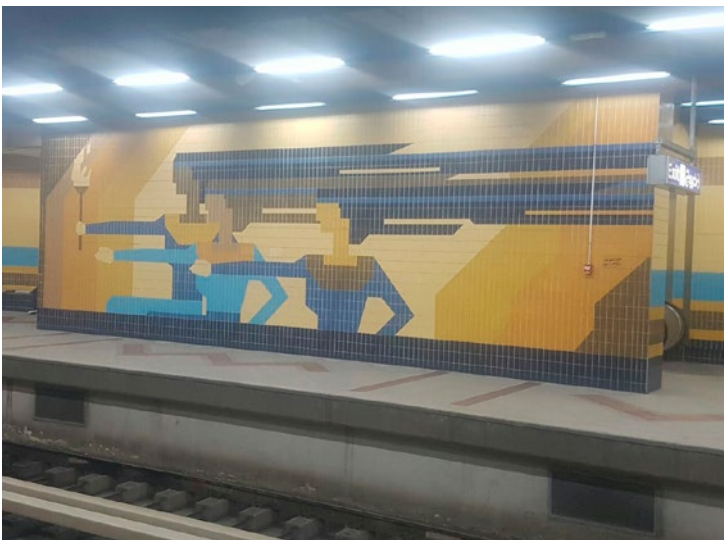
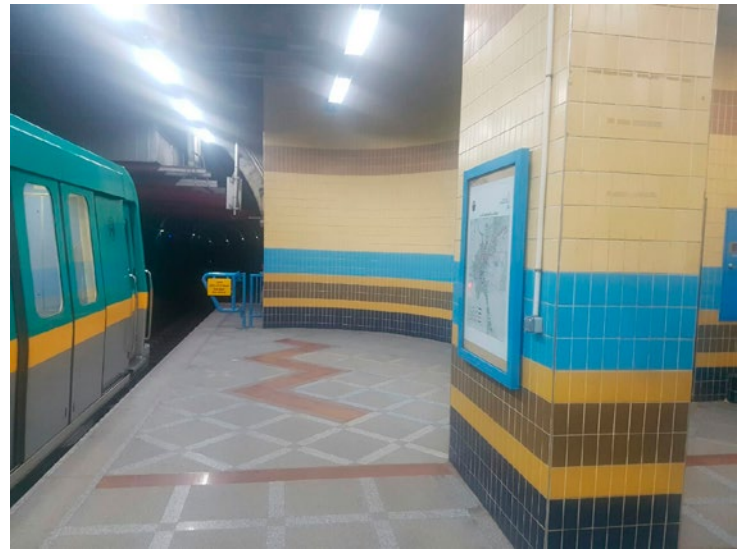
### WY SIKA

In addition to being able to provide the ideal product, Sika was selected because they could also provide dedicated project management with full onsite technical support throughout the project.

### PRODUCTS DELIVERD

SikaCeram®-100: 70 Tons

Sika® Tile Grout®: 20 Tons



# CAIRO METRO LINE 3, PHASE 4 A



## PROJECT PARTICIPANTS

Owner: Egyptian Ministry of Transport / Egypt's National Authority for Tunnels (NAT)  
Main Contractor: Joint Venture between VINCI Construction Grand Projects, Bouygues Travaux Publics and Egyptian partners, Orascom Construction and Arab Contractors  
Consultant: ACE - Muharram Bakhoum Consultancy office  
Project Manager: Sysra

Our most current General Sales Conditions shall apply.  
Please consult the Data Sheet prior to any use and processing.



**SIKA SERVICES AG**  
Tüffenwies 16  
CH-8048 Zürich  
Switzerland

**Contact**  
Phone +41 58 436 40 40  
[www.sika.com](http://www.sika.com)

**BUILDING TRUST**

