



SEALING & BONDING TUNNEL SEALING SYSTEMS

YOUR STRONGEST PARTNER FOR EXPANSION JOINT & SEALING SYSTEMS



BUILDING TRUST



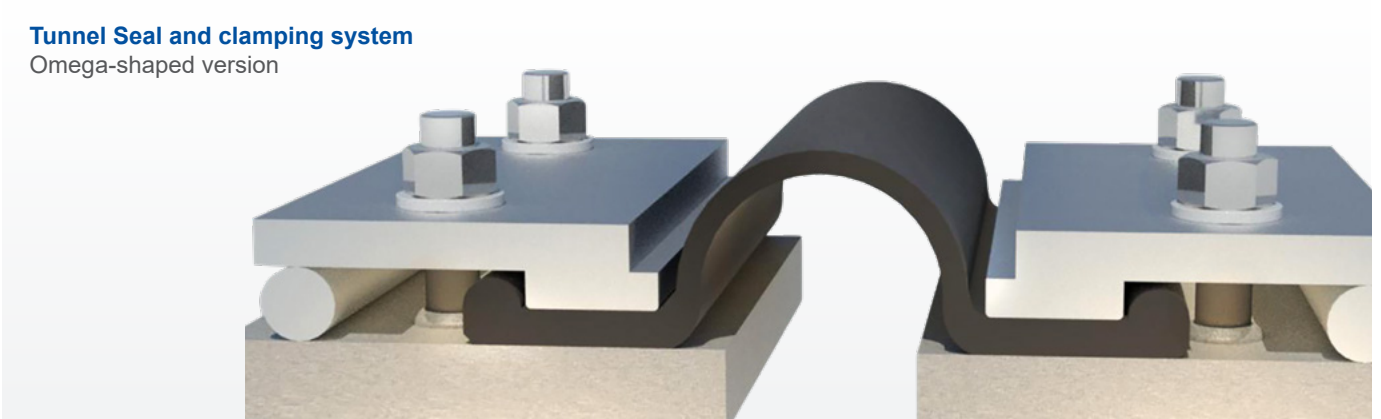
Watson Bowman Acme Tunnel Solutions

Because Sealing is What We Do

WBA offers expertise in sealing and protecting for all industries including bridge, highway, and tunnel. Solutions are designed with our customers in mind, using high quality materials that are easy to install and even easier to maintain.

Our capabilities extend beyond any other manufacturer in the industry, with our ability to create custom designs, and fabricate in-house. Let us share our technical know-how as we assist you on your upcoming project.

Tunnel Seal and clamping system
Omega-shaped version



Watson Bowman Acme is 100% focused on expansion joints, sealing and water-protectant technologies

WBA's Tunnel Seal
Used to seal of tunnel exit/
entrance of Regional connector
project in Los Angeles, CA



Tunnel Sealing Systems

WBA is a proud supplier of the complete Omega-shaped Tunnel Seal system. We proudly design and fabricate our clamping system in the United States, reducing lead times on your project.

The WBA Tunnel Seal is capable of taking on large multidirectional movements while withstanding high water pressure. This is an ideal solution for both immersed and bored tunnels as well as aqueducts and more.



FEATURES

- Up to 125 year design life with little to no maintenance
- For new tunnels or rehab of existing tunnels
- Withstands high water pressure
- Accommodates large movements in all directions

APPLICATIONS

- Station to Tube connections
- Caissons
- Cross passage connection
- Basements
- Underpasses
- Diaphragm walls
- Foundations
- Joints in structure with large movements or high pressure

Watson Bowman Acme's Tunnel Seal clamping system is fabricated in the United States and meets Buy America guidelines



Watson Bowman Acme

Notable Projects

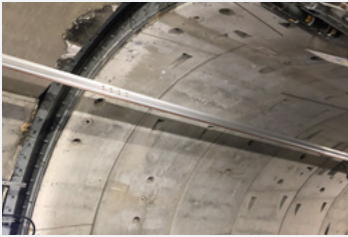


Crenshaw/ LAX Transit Corridor

Los Angeles, CA

Problem: Seal needed to withstand water pressure and large multi-directional movements.

Solution: Contractors on this project were faced with a tight timeline. WBA was able to react quickly and provide the materials needed.



Regional Connector Transit Project

Los Angeles, CA

Problem: Congested roadways in LA give way to underground transportation solutions in seismic zones.

Solution: 3 new stations were built for this \$1.756M project which WBA provided 13 Tunnel seals.



Water Pollution Control Plant Effluent Outfall Tunnel

Los Angeles, CA

Problem: Aging infrastructure threatens local waterways in which 73 cities in the LA basin rely on for sanitation treatment.

Solution: The project consists of constructing 7 miles of 18-ft internal diameter precast concrete segmental lining tunnel from a single heading with a pressurized face TBM and all appurtenant work.



Louis Fontaine Tunnel

Montreal, QB

Problem: Originally built in 1960 as part of the Trans-Canada highway system, a refurbishment of the structure is needed.

Solution: The structural rehabilitation of the tunnel will extend its life by another 40 years. WBA worked with Engineers to refit the original seals. Installation of seals scheduled to take place in 2022.

WE ARE SIKA

In May 2023, Watson Bowman Acme became part of Sika.

Sika is a specialty chemicals company with a leading position in the development and production of systems and products for bonding, sealing, damping, reinforcing and protecting in the building sector and the motor vehicle industry. Sika's product lines feature concrete admixtures, mortars, sealants and adhesives, structural strengthening systems, industrial flooring as well as roofing and waterproofing systems.

SIKA (NZ) LTD
85 Patiki Road
Auckland 1026
New Zealand

Contact
Phone: 0800 745 269
www.sika.co.nz



BUILDING TRUST

