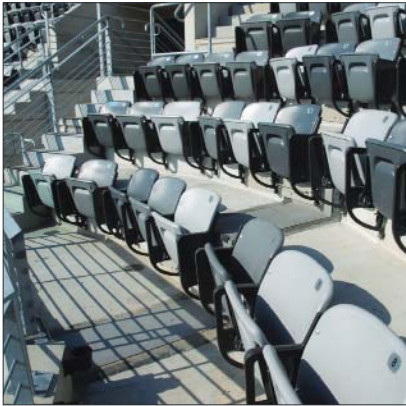


**Now Available
UL/ULC-Certified Fire-Rated**

www.emseal.com



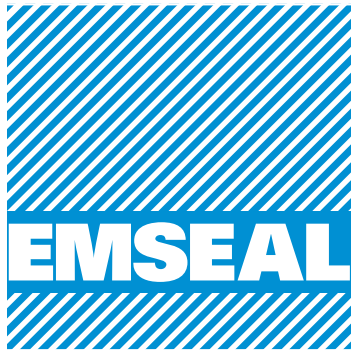
**Structural Expansion Joints
in Treads and Risers**



**Control Joints or Welded Tee
Joints in Treads and Risers**



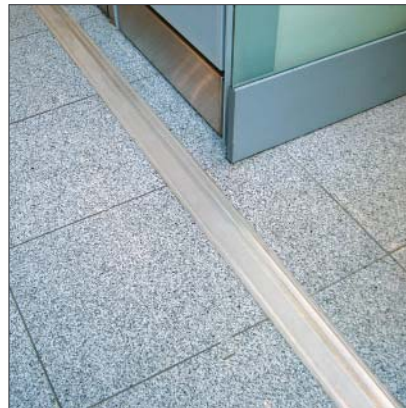
**Concourse Joints
Split or Solid Slab**



The Proven Solution in Sport Facility Expansion Joints



**Vertical Walls & Ceilings
Suites / Vending / Bathrooms**



**Interior Joints
Boxes / Suites**



**Vertical Plane
Structural Separations:
Parapet & Transitions**



The Proven Solution

A Complete Line of Sports Facility Expansion Joint Products

The Solution for

Structural Expansion and Control Joints in Treads and Risers of Seating Bowl

Superior Solution for Control and Expansion Joints up to 4-inches (100mm)

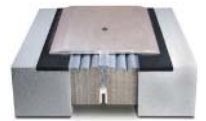
DSM is a watertight, joint-faced-adhered, precompressed impregnated foam with 55% movement (+30% and -25%) incorporating a factory-coated highway-grade silicone bellows surface. Provides a trafficable seal with simplest installation. Available as factory-fabricated Universal-90's for seamless transitions from horizontal to vertical upturns, downturns and terminations.



DSM System

Seismic and Large Gap Expansion Joints with Traffic Coverplate

SJS System is made up of silicone-and-impregnated foam hybrid components that are constructed from 2 horizontal joints pre-assembled in parallel adjacent to a heavy-duty extruded aluminum spline which anchors the surface-mounted traffic bearing plates. SJS is watertight and does not require a gutter system typically used by other systems for large-gap conditions. Factory fabricated transitions are available. 100% movement (+50% and -50%).



SJS System

The Solution for

Concourse Joints Over Occupied Space

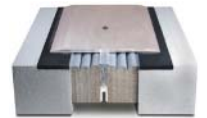
Installed in Solid Slab Construction

DSM (small joints / lighter traffic) **DSM** is a watertight, joint-faced-adhered, precompressed impregnated foam with 55% movement (+30% and -25%) incorporating a factory-coated highway-grade silicone bellows surface. Provides a trafficable seal with simplest installation.



DSM System

SJS System (larger joints / heavy point loads) is made up of silicone-and-impregnated foam hybrid components that are constructed from 2 horizontal joints pre-assembled in parallel adjacent to a heavy-duty extruded aluminum spline which anchors the surface-mounted traffic bearing plates. SJS is watertight and does not require a gutter system typically used by other systems for large-gap conditions. 100% movement (+50% and -50%).



SJS System

Installed in Split Slab Construction

SJS-FP System is installed on the structural slab and incorporates side flashing sheets that are integrated with the deck waterproofing system to form a continuous, completely watertight system. Factory fabricated transitions and terminations are available.



SJS/FP

Stadium Products

The Solution for

Vertical Plane Structural Separations: Parapets and Transitions to Exterior Walls, Bowl Joints, and Stair and Elevator Towers

SEISMIC COLORSEAL is a precompressed, acrylic-impregnated expanding watertight foam sealant that is factory pre-coated with silicone available in 26 industry-standard colors. Simple installation and non-invasive anchoring. 100% movement (+/- 50%)

The Solution for

Vertical Walls and Ceilings at Boxes and Suites, Vending and Bathrooms

COLORSEAL 50% movement (+/- 25%) and **SEISMIC COLORSEAL** 100% movement (+/- 50%) are precompressed, acrylic-impregnated expanding watertight foam sealants that are factory pre-coated with silicone available in 26 industry-standard colors. Simple installation and non-invasive anchoring.

The Solution for

Interior Floor Joints

FS Series is an interlocking system of heavy-duty aluminum extrusions capable of accepting 3-dimensional movement and high point loads.

The Solution for

Below Grade Walls and Ice Floors

DSM is a watertight, joint-faced-adhered, precompressed impregnated foam with 55% movement (+30% and -25%). Available as factory-fabricated Universal-90's.

The Solution for

Upturns, Downturns and Terminations

Universal-90's are factory-fabricated impregnated foam units which create changes in plane from horizontal to vertical for both inside or outside exterior faces eliminating field cuts and 90-degree joints.

The Solution for

Fire-Rated Expansion Joints

EMSHIELD line of UL/ULC-certified fire-rated, watertight, precompressed impregnated foam expansion joints for use in vertical or horizontal applications. Available in product variations for all size expansion gaps and applications throughout new and retrofit stadium construction. Applicable for both exterior and interior applications.

EMSHIELD DFR 2* (2-hour fire-rated) and **DFR 3** (3-hour fire-rated)**

Horizontal applications / *± 50% (100% total) **± 25% (50% total) movement / Sizes 1/2-in (12mm) to 4-in (100mm) / Traffic-grade Also available with pick-resistant, tamper-resistant surface **Security Seal SSF**

EMSHIELD WFR 2* (2-hour fire-rated) and **WFR 3** (3-hour fire-rated)**

Vertical applications / *± 50% (100% total) **± 25% (50% total) movement / Sizes 1/2-in (12mm) to 6-in (150mm) / 26 colors Also available with pick-resistant, tamper-resistant surface **Security Seal SSW**

EMSHIELD SJS-FR 1 (1-hour fire-rated) and **SJS-FR 2 (2-hour fire-rated)**

Horizontal large and seismic gaps / ± 50% (100% total) movement / Sizes 4-in (12mm) to 10-in (250mm) / Coverplate Also available for split-slab construction **EMSHIELD SJS-FP-FR**



SEISMIC COLORSEAL



COLORSEAL



FS Series



DSM System



Universal 90's



EMSHIELD Products

Does your sports facility have a need for watertight expansion joints?

EMSEAL can fill your needs.

Application	Property	Product Joint Size	Comparable Fire-Rated Available*
Structural Expansion Joint in Treads and Risers	Precompressed, impregnated, expanding watertight foam - joint face adhered 55% (+30% / -25%) Movement	DSM System 1/2-inch (12mm) – 4-inch (100mm)	✓ Yes
	Seismic and large expansion gaps Trafficable coverplate Precompressed, impregnated, expanding watertight foam - joint face adhered 100% (+50% / -50%) Movement	SJS System 4-inch (100mm) – 10-inch (250mm)+	✓ Yes
Concourse Joints over Occupied Space - Solid Slab	Precompressed, impregnated, expanding watertight foam - joint face adhered 55% (+30% / -25%) Movement	DSM System 1/2-inch (12mm) – 4-inch (100mm)	✓ Yes
	Seismic and large expansion gaps Trafficable coverplate Precompressed, impregnated, expanding watertight foam - joint face adhered 100% (+50% / -50%) Movement	SJS System 4-inch (100mm) – 10-inch (250mm)+	✓ Yes
Concourse Joints over Occupied Space - Split Slab	Trafficable coverplate Precompressed, impregnated, expanding watertight foam - joint face adhered Integrated side flashing sheet to combine with deck waterproofing membrane 100% (+50% / -50%) Movement	SJS-FP 4-inch (100mm) – 10-inch (250mm)+	✓ Yes
Vertical Plane Structural Separations	Precompressed, impregnated, expanding watertight foam - joint face adhered 100% (+50% / -50%) Movement	SEISMIC COLORSEAL 1/2-inch (12mm) – 8-inch (200mm)	✓ Yes
Interior Walls and Ceilings	Precompressed, impregnated, expanding watertight foam - joint face adhered CS = 50% / SCS = 100% Movement	COLORSEAL or SEISMIC COLORSEAL 1/2-inch (12mm) – 8-inch (200mm)	✓ Yes
Interior Floors	Interlocking system of heavy-duty aluminum extrusions capable of accepting 3-dimensional movement and high point loads	FS Series	YES – when combined with EMSHIELD product
Below Grade Joints and Ice Floors	Precompressed, impregnated, expanding watertight foam - joint face adhered 55% (+30% / -25%) Movement	DSM System 1/2-inch (12mm) – 4-inch (100mm)	✓ Yes
All Transitions	Joints between similar and dissimilar systems	WARRANTED by EMSEAL	

* Consult EMSEAL on application sizes and movement capabilities

For more information about EMSEAL watertight systems please contact our technical department at 800-526-8365 or visit us at www.emseal.com

