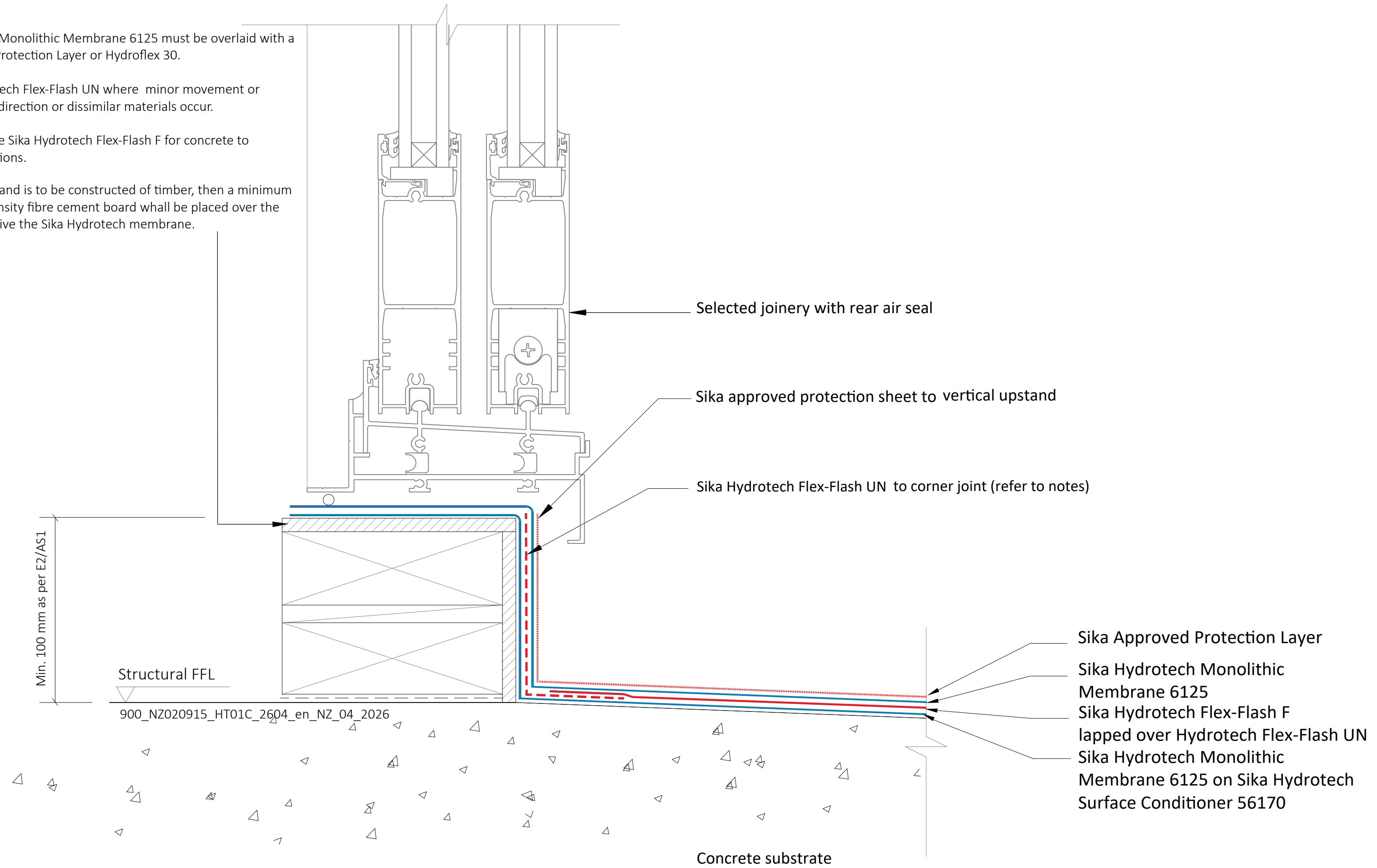


Notes:
Sika Hydrotech Monolithic Membrane 6125 must be overlaid with a Sika Approved Protection Layer or Hydroflex 30.

Use Sika Hydrotech Flex-Flash UN where minor movement or change in level direction or dissimilar materials occur.

Alternatively use Sika Hydrotech Flex-Flash F for concrete to concrete transitions.

Where the upstand is to be constructed of timber, then a minimum 13 mm high-density fibre cement board shall be placed over the upstand to receive the Sika Hydrotech membrane.



SIKA HYDROTECH MONOLITHIC MEMBRANE 6125

Balcony Upstand

General Detail. Not to scale.

DRAWING MUST ALWAYS BE REVIEWED BY A DESIGN SPECIALIST AND IF NECESSARY MODIFIED TO ENSURE SUITABILITY FOR THE SPECIFIC APPLICATION

The information contained herein and any other advice are given in good faith based on Sika's current knowledge and experience of the products when properly stored, handled and applied under normal conditions in accordance with Sika's recommendations. The information only applies to the application(s) and product(s) expressly referred to herein and is based on laboratory tests which do not replace practical tests. In case of changes in the parameters of the application, such as changes in substrates etc., or in case of a different application, consult Sika's Technical Service prior to using Sika products. The information contained herein does not relieve the user of the products from testing them for the intended application and purpose. All orders are accepted subject to our current terms of sale and delivery. Users must always refer to the most recent issue of the local Product Data Sheet for the product concerned, copies of which will be supplied on request.

900_NZ020915_HT01C_2604_en_NZ_04_2026

April 2026

Sika (NZ) Ltd

85 Patiki Road

Auckland 1026

New Zealand.

Ph. 0800 745 269

www.sika.co.nz

BUILDING TRUST

