



CUSTOMISABLE SOLUTIONS BECAUSE  
NO TWO BRIDGES ARE THE SAME

# SEALING & BONDING FINGER JOINT EXPANSION SYSTEMS

YOUR STRONGEST PARTNER FOR EXPANSION JOINT & SEALING SYSTEMS



**BUILDING TRUST**



# Importance of Finger Joints



Expansion joints are a critical link to the sustainability of a bridge structure. Systems are designed to handle the various impact loadings and movements with proven long-term structural integrity. When engineered and installed properly, finger joint assemblies help to:

- Prevent structural damage by absorbing movement to include thermal cycles and seismic activity
- Extend the life of bridge decks by providing smooth transitions

## Why Watson Bowman Acme?

Watson Bowman Acme is committed to exceeding project goals and providing innovative expansion control systems and services to the construction industry and the complex structures they design, build and operate.



### Reliability

65+ years of designing, developing and manufacturing fully customized finger joint solutions



### Technical Expertise

WBA engineering and field experts bring real solutions to your unique project requirements from concept to on-site technical support.

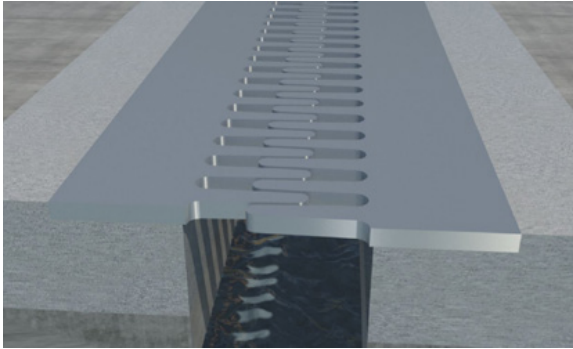


### Quality

Committed to providing the highest quality products and services backed by WBAs ISO 9001:2015 certification, and Lean Six Sigma methodology.

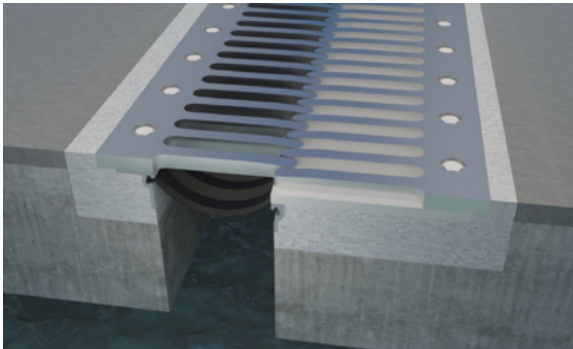
# Wabo® Finger Joint Expansion Systems:

Expanding on traditional Finger Joint technology, Watson Bowman Acme is leading the bridge industry with its full line of customizable finger joint expansion systems.



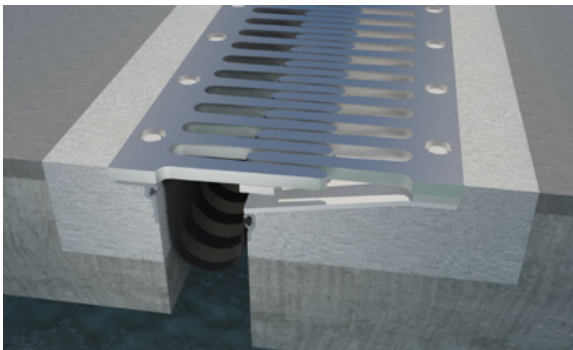
## **Wabo® Standard Finger Joint (FIN)**

Traditional cantilever finger joint technology fabricated in one piece for easy installation.



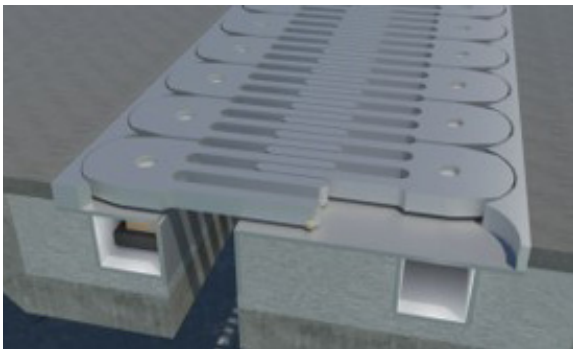
## **Wabo® FingerPlus (FINP)**

Sliding finger joint with a mechanically locked drainage system for watertightness. Ideal for stage construction and ease of maintenance/repair



## **Wabo® FingerPlus-EasyClear (FINQ)**

All the benefits of the FingerPlus technology with a self-cleaning debris removal system.



## **Wabo® Trident Finger Joint (FINT)**

Patented technology that allows for both transversal and multidirectional movements. The only finger joint system of its kind.



# Features and Benefits

		STANDARD	FINGERPLUS	FINGERPLUS-EASYCLEAR	TRIDENT
FEATURE	BENEFIT				
<b>Customizable System</b>	Designed and manufactured to meet your unique and complex projects.	✓	✓	✓	✓
<b>Fully Compliant</b>	Accommodates AASHTO design requirements for vehicular loads and opening requirements.	✓	✓	✓	✓
<b>Impact Resistance</b>	Robust design to accommodate high impact and repetitive loading conditions.	✓	✓	✓	✓
<b>Sound Attenuation</b>	Designed to eliminate noise when vehicles travel across the joint.	✓	✓	✓	✓
<b>Ease of Maintenance</b>	Seal inspection, maintenance and replacement can now be completed from top of deck saving time and money.	-	✓	✓	✓
<b>Watertight Design</b>	More robust and less susceptible to corrosion than typical trough mounting hardware.	-	✓	✓	-
<b>Debris Removal</b>	Pitched support plate facilitates quick flushing and debris removal.	-	-	✓	-
<b>Multi Axis Movement</b>	Accommodates movements In all orthogonal directions ideal for seismic activity, thermal cycles.	-	-	-	✓



# Selecting the Right Solution

## STEP 1

Determine which Wabo® finger joint system best meets your bridge project needs.

## STEP 2

Collaborate with our experts to customize the system specific for your bridge project.

## STEP 3

We deliver a high-quality, responsible, safe finger system to you on time and on budget.



## SELECTION GUIDE

FEATURE	STANDARD	FINGERPLUS	FINGERPLUS-EASYCLEAR	TRIDENT
Installation Ease	BEST	BETTER	BETTER	GOOD
Noise Control	BETTER	BETTER	BETTER	BEST
Watertight	GOOD*	BEST	BEST	GOOD*
Debris Removal	GOOD	BETTER	BEST	GOOD*
Cleaning/Maintenance	GOOD	BETTER	BEST	BEST
Repair	GOOD	BETTER	BETTER	BEST



\*See add-on features for optional trough

## ADD-ON

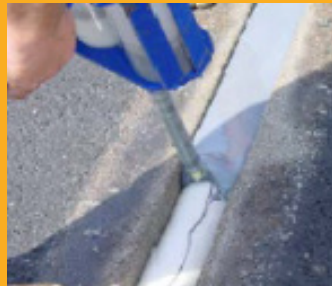
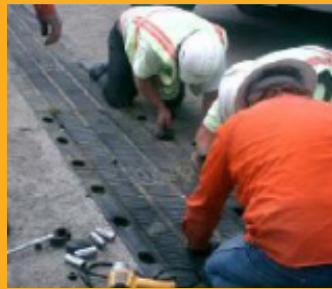
**FEATURES** The following options are available to better fit your application requirements:

	STANDARD	FINGERPLUS	FINGERPLUS-EASYCLEAR	TRIDENT
Trough and Water Collection	X			X
Stay-In-Place Form Work	X	X	X	X
Level Angles Available	X	X	X	X

# Technology Experts

Watson Bowman Acme experts are well-versed in a wide selection of expansion joint technologies to meet your new construction, maintenance and preservation needs.

- Silicone Joint Technology
- Preformed Neoprene Seal Technology
- Asphaltic Plug Joint Technology
- Foam Seal Technology
- Molded Segmental Joint Technology
- Armorless Joint Technology
- Armored Joint Seal Assembly Technology



7/0225

## WE ARE SIKA

**In May 2023, Watson Bowman Acme became part of Sika.**

Sika is a specialty chemicals company with a leading position in the development and production of systems and products for bonding, sealing, damping, reinforcing and protecting in the building sector and the motor vehicle industry. Sika's product lines feature concrete admixtures, mortars, sealants and adhesives, structural strengthening systems, industrial flooring as well as roofing and waterproofing systems.

**SIKA (NZ) LTD**  
85 Patiki Road  
Auckland 1026  
New Zealand

**Contact**  
Phone: 0800 745 269  
[www.sika.co.nz](http://www.sika.co.nz)



**BUILDING TRUST**

