

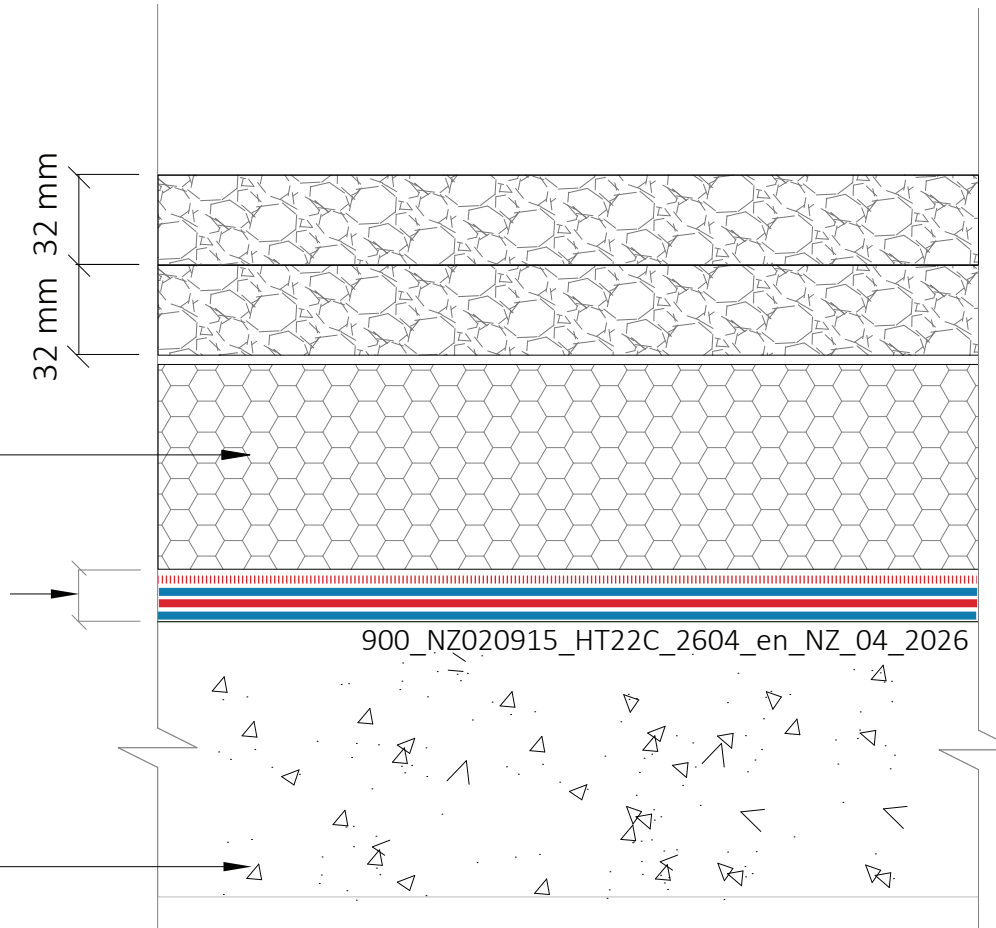
PMR Roof with Asphalt

Asphalt - 2 layers, each >32 mm thick

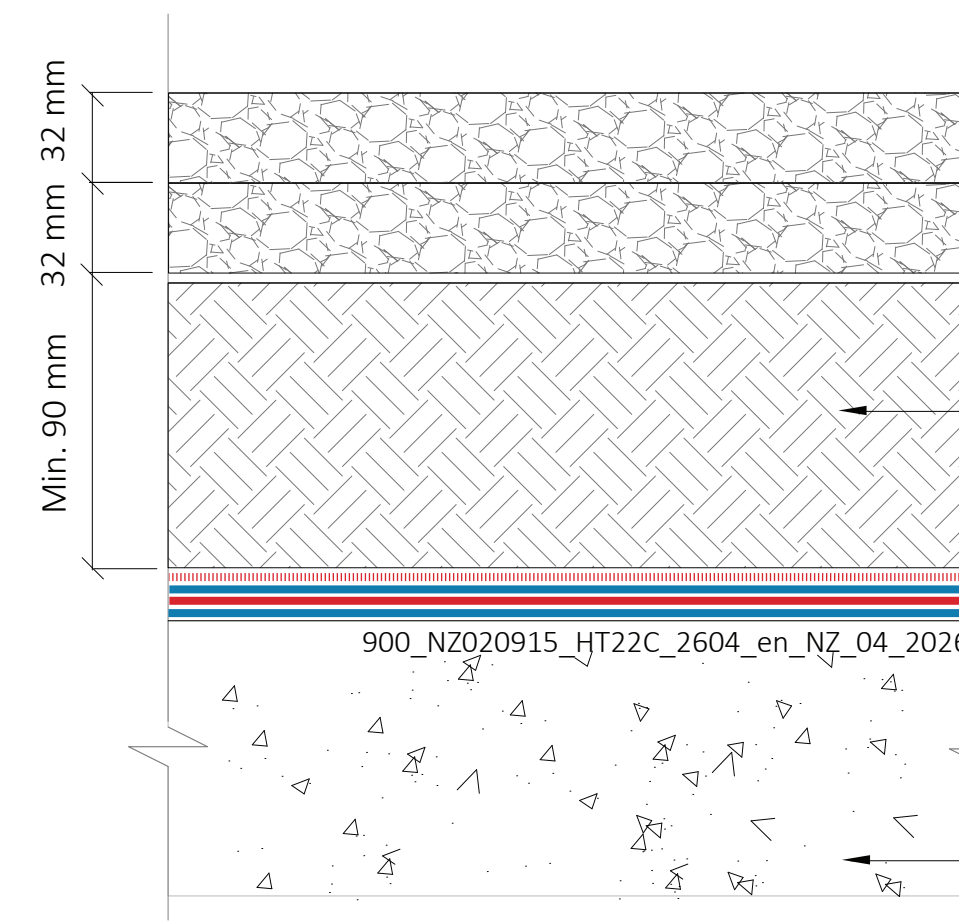
Sika Approved 600 or 100 psi XPS Insulation

Sika Hydrotech Monolithic Membrane 6125 System*

Concrete



Cold Roof with Asphalt over Hardfill



Compacted hardfill, minimum 90 mm thick

Sika Hydrotech Monolithic Membrane 6125 System*

Concrete

Notes:

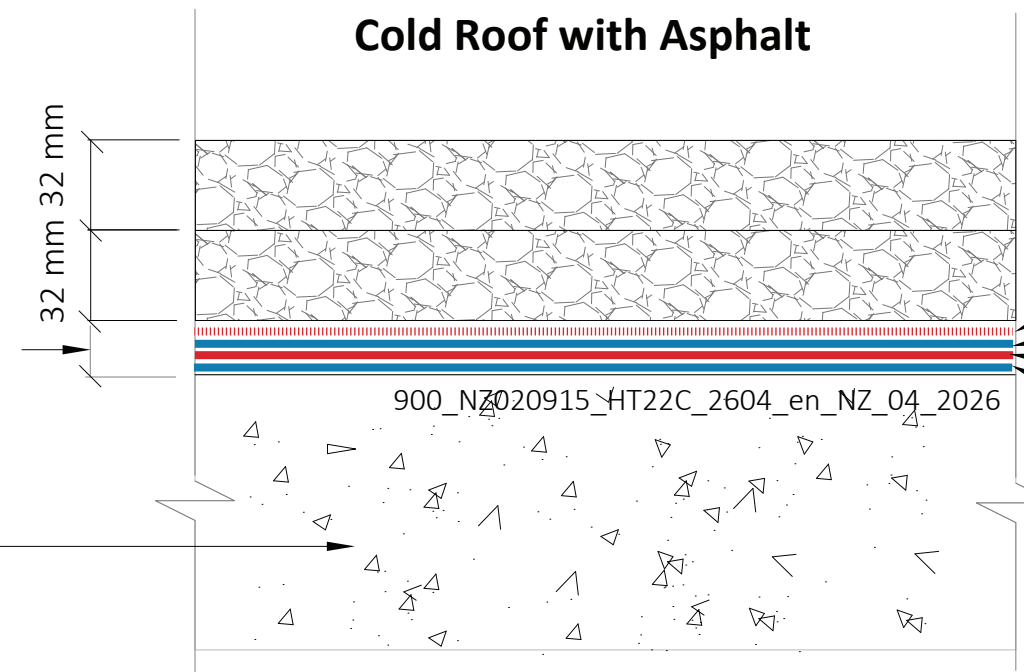
Sika Hydrotech Monolithic Membrane 6125 must be overlaid with a Sika Approved Protection Layer or Hydroflex 30.

Cold Roof with Asphalt

Asphalt - 2 layers, each >32 mm thick

Sika Hydrotech Monolithic Membrane 6125 System

Concrete



***System Structure:**

Sika Approved protection sheet

Sika Hydrotech Monolithic Membrane 6125

Sika Hydrotech Flex-Flash F

Sika Hydrotech Monolithic Membrane 6125 on Sika Hydrotech Surface Conditioner 56170

SIKA HYDROTECH MONOLITHIC MEMBRANE 6125

PMR Roof or Cold Roof, asphalt options

General Detail. Not to scale.

900_NZ020915_HT22C_2604_en_NZ_04_2026

April 2026

Sika (NZ) Ltd

85 Patiki Road

Auckland 1026

New Zealand.

Ph. 0800 745 269

www.sika.co.nz

DRAWING MUST ALWAYS BE REVIEWED BY A DESIGN SPECIALIST AND IF NECESSARY MODIFIED TO ENSURE SUITABILITY FOR THE SPECIFIC APPLICATION

The information contained herein and any other advice are given in good faith based on Sika's current knowledge and experience of the products when properly stored, handled and applied under normal conditions in accordance with Sika's recommendations. The information only applies to the application(s) and product(s) expressly referred to herein and is based on laboratory tests which do not replace practical tests. In case of changes in the parameters of the application, such as changes in substrates etc., or in case of a different application, consult Sika's Technical Service prior to using Sika products. The information contained herein does not relieve the user of the products from testing them for the intended application and purpose. All orders are accepted subject to our current terms of sale and delivery. Users must always refer to the most recent issue of the local Product Data Sheet for the product concerned, copies of which will be supplied on request.

BUILDING TRUST

