



ROOFING & WATERPROOFING
HYDROTECH MONOLITHIC
MEMBRANE 6125®



BUILDING TRUST



60+ YEARS OF PROVEN PERFORMANCE IN THE FIELD.

Hydrotech's Monolithic Membrane 6125[®], the original rubberized asphalt membrane, has been entrusted with keeping high profile structures across the country and around the globe watertight for over 60 years. With billions of square feet of MM6125[®] installed, Hydrotech is recognized as the leader in the waterproofing industry.

Not satisfied to rest on our past successes, we have developed a full range of thermal and moisture protection products, drainage systems, The Ultimate Assembly for plazas, decks and roof terraces, the Garden Roof[®] Assembly for vegetated roof applications, and most recently our Blue Roof Assembly.

We will continue to expand our product line to give architects and owners superior flexibility and design options for plazas, roofs, parking decks and critical waterproofing projects.



Jacobs Field - Cleveland, OH



Point of Americas II - Ft. Lauderdale, FL



J. Paul Getty Museum - Los Angeles, CA

MONOLITHIC MEMBRANE 6125®: BENEFITS AND FEATURES

Thermoplastic Material - one component, 100% solids, no solvents means no on-site cure failures, no two-part mixing and no VOC restrictions.

Dead Level Applications - can withstand and perform in submersed water conditions and is fully warrantable. The perfect membrane for flat, zero slope decks, water features, pools and vegetated roofs.

Monolithic Membrane - seamless, conforms to deck irregularities, and self-healing of minor construction damage. Since it is applied directly to the deck, water is restricted from migrating laterally between the substrate and the membrane.

Cold Weather Applications - can be applied to 0°F (-18°C) and is unaffected by adverse weather conditions immediately after installation.

Recycled Content - Monolithic Membrane 6125®, is formulated with up to 40% post-consumer recycled content.

High Viscosity Material - applied at 215 mils (5.5 mm) or 180 mils (4.5 mm), 2-3 times thicker than many other membranes, for better crack bridging, ease of flashing and substrate acceptability.

Superior Toughness/Tenacity - means excellent adhesion to substrate and cohesive strength. Also, superb elongation and low temperature flexibility ensure the membrane does not become brittle.

Acid Resistance - highly resistant to fertilizers, building washes, acid rain, methane and numerous wastes - unlike other rubberized asphalt products that use various forms of inexpensive calcium carbonate fillers.

Combined, these attributes make MM6125® a membrane that performs so well that it is rated by British Board of Agrément (BBA) as **“an effective barrier to the transmission of water... for the design life of the roof structure.”**

- Agrément No. 90/2431



Millennium Park - Chicago, IL

RIGOROUS QUALITY CONTROL

Monolithic Membrane 6125 is manufactured with rigid quality control under an ISO 9001:2015 certified quality management system. Besides earning the BBA Agrément Approval from the United Kingdom, MM6125 carries approvals from North America such as CGSB-37.50-M89, CCMC, National Defense, UL & ULC Class A Ratings and numerous international certifications and approvals. Local approvals include Dade County, Florida, City of Los Angeles and New York City's MEA. MM6125 is installed only by a network of authorized and trained installers, a key reason for the enormous success of the Hydrotech program.



MEMBRANE ASSEMBLY COMPONENTS

FLASHING/REINFORCEMENT

Hydrotech® Flex-Flash F: A spun-bonded polyester fabric reinforcement for detailing conditions with Monolithic Membrane 6125® such as changes in plane, construction joints and cracks. It is also used as the reinforcement in the MM6125-FR assembly (90 mils, fabric, 125 mils).

Hydrotech® Flex-Flash UN: An uncured neoprene flashing used at exposed walls, curbs, penetrations, expansion joints and angle changes.

SEPARATION AND PROTECTION COURSES

Hydrotech Hydroflex® 30: A fiberglass reinforced, rubberized asphalt protection course. Hydroflex will not shrink or curl, reducing the likelihood of damage and stress on the membrane.

Sika® Geotextile-500: A 500 g/m² levelling and protective geotextile layer based on Polyethylene terephthalate (PET).

DRAINAGE COMPONENTS

SikaRoof® Drainage Composite 5006 H: a high quality, prefabricated drainage composite designed to protect the waterproofing membrane and provide continuous free flow of water in horizontal applications such as green roofs, plaza decks and planters.



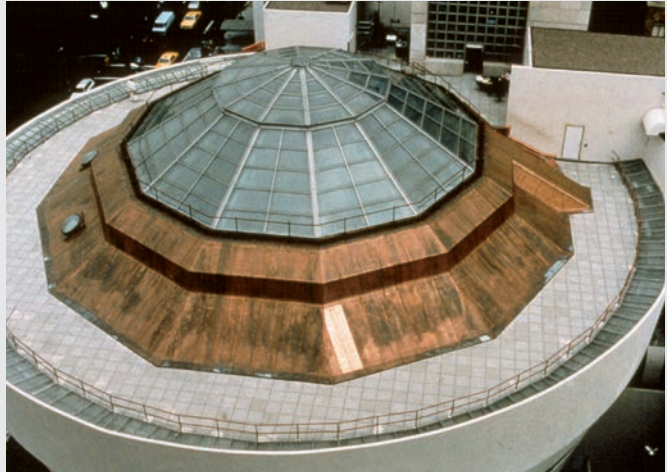
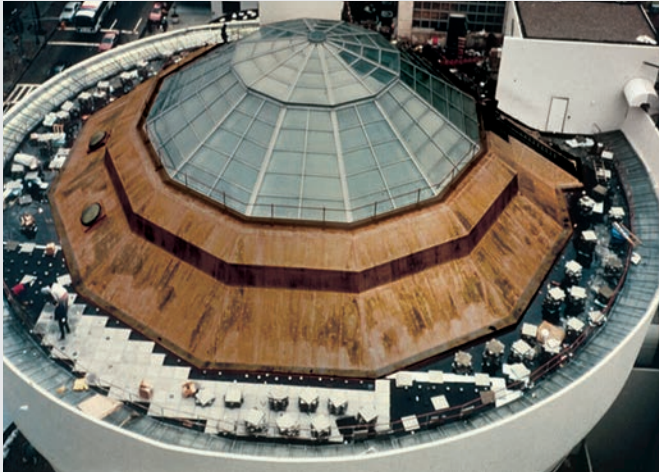
NEW CONSTRUCTION OR RENOVATION

While an excellent choice for new construction, Monolithic Membrane 6125® is also ideal for renovation projects. If you own a building that has a roof and/or plaza deck in need of major repair, you are not alone. Deteriorating topping materials, serious leaks and loss of insulating value are some of the problems facing many

owners. These problems may be symptomatic of improper design, construction errors, inadequate material specifications or use of a product with an unknown track record...or waterproofing membranes that have exceeded their "performance life."

Hydrotech Monolithic Membrane 6125 is the ideal choice for renovation applications because it can easily handle:

- Rough concrete / spalled concrete
- Difficult detailing conditions
- Phased construction
- Little or no slope



Guggenheim Museum - New York, NY

SUSTAINABILITY / LEED®


Construction is no longer just about building and development: it's about building smart. That entails limiting the impact of the construction process on the very environment that nurtures us, building for the long-term and catering to global needs and issues.

Hydrotech has developed products, systems and alliances that reflect and reinforce our commitment to environmental sustainability. As producers of one of the industry's best-performing membranes, Hydrotech has also introduced some of the industry's most sustainable waterproofing assemblies. For instance, our MM6125® is a hot-applied rubberized asphalt that contains up to 40% post-consumer recycled content.

Hydrotech Monolithic Membrane 6125, the foundation for all our waterproofing and roofing assemblies, also helps garner LEED points on projects around the country each and every day. Hydrotech assemblies feature recycled content in the membrane and reduced lifecycle costs due to product longevity (which also reduces its impact on landfills). In addition, The Ultimate Assembly® delivers energy savings through reflective pavers, while our Garden Roof® and Blue Roof Assemblies can assist you with stormwater management requirements to help meet a project's BMP's.

In short, Hydrotech has the solutions that fit the long-term sustainability strategies savvy building owners and operators are demanding of the products and assemblies they specify.

Hydrotech Roofing, Waterproofing, Ultimate and Garden Roof Assemblies - Possible LEED V. 4 points

	 Protect or Restore Habitat	Open Space	Rainwater Management	Heat Island Reduction	Places of Respite	Direct Exterior Access	Outdoor Water Use Reduction	Optimize Energy Performance**	Building Life Cycle Impact Reduction	Environmental Product Declarations	Sourcing of Raw Materials	Material Ingredients	Integrative Process	Innovation
	SS	SS	SS	SS	SS	SS	WE	EA	MR	MR	MR	MR	IP	IN
PMR Assembly	-	-	-	-	-	-	-	1-18	1-3	1-2	1-2	1-2	1	1-2
Ultimate Assembly	-	1	-	1-2	1*	1*	-	1-18	1-3	1-2	1-2	1-2	1	1-2
Garden Roof Assembly	2	1	2-3	1-2	1*	1*	1-2	1-18	1-3	1-2	1-2	1-2	1	1-2

MM6125 has an Environmental Product Declaration (EPD) conforming to ISO 14025 and ISO 21930

* Healthcare projects only

**Energy performance influenced by many factors

TYPICAL WATERPROOFING APPLICATIONS

To achieve a 20 year warranty, the system build-up must include the defined Fabric Reinforced (FR) Assembly

CORE SYSTEM BUILD-UP

Fabric Reinforced (FR) Assembly (6 mm thickness)

Hydrotech® Hydrocap 160 FR

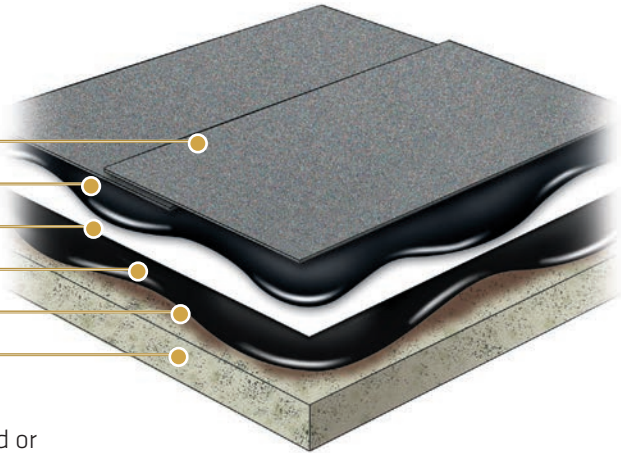
Hydrotech® Monolithic Membrane 6125° (3 mm)

Hydrotech® Flex-Flash F Reinforcement

Hydrotech® Monolithic Membrane 6125° (3 mm)

Hydrotech® Surface Conditioner 56170

Approved Substrate



Acceptable Substrate: cast-in-place concrete, composite deck, precast concrete ("T", double "T" or panel), wood plank, plywood or metal deck with approved substrate board

Not Acceptable: lightweight insulating or cellular concrete

Vertical Waterproofing

Typical components depicted

Sika Approved 60 or 100 psi XPS Insulation

Hydrotech® Monolithic Membrane 6125° (FR Assembly)

Hydrotech® Hydroflex 30

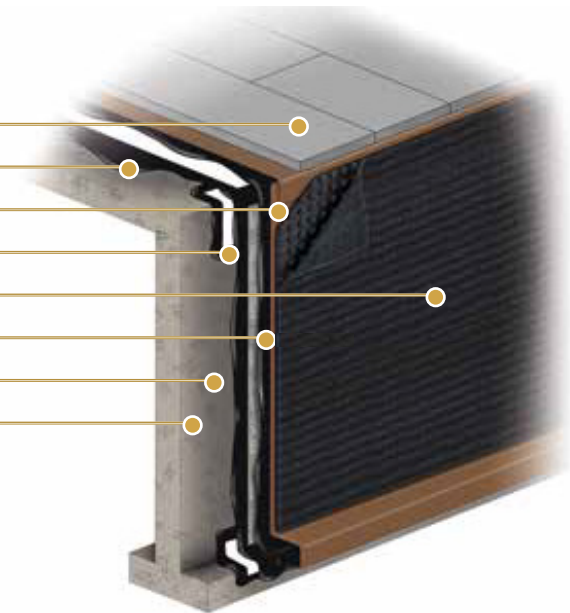
Hydrotech® Flex Flash F

SikaRoof Drainage Composite 5006 H

Hydrotech Monolithic Membrane 6125 (FR Assembly)

Hydrotech Surface Conditioner 56170

Approved Substrate



Split Slab Construction

Typical components depicted

Concrete Topping Slab

SikaRoof Drainage Composite 5006 H

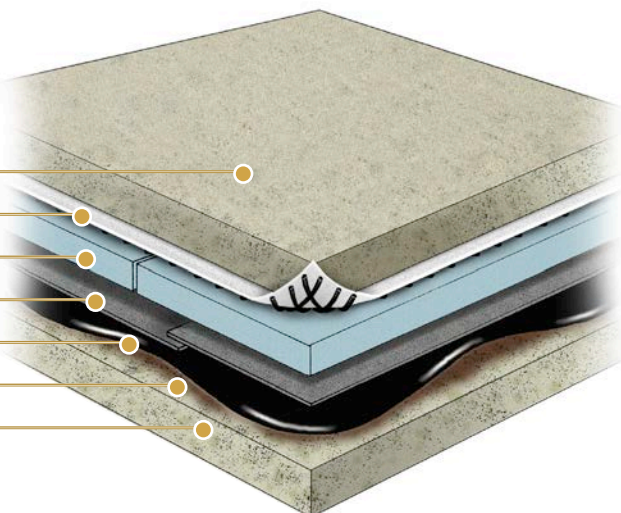
Sika Approved 60 or 100 psi XPS Insulation

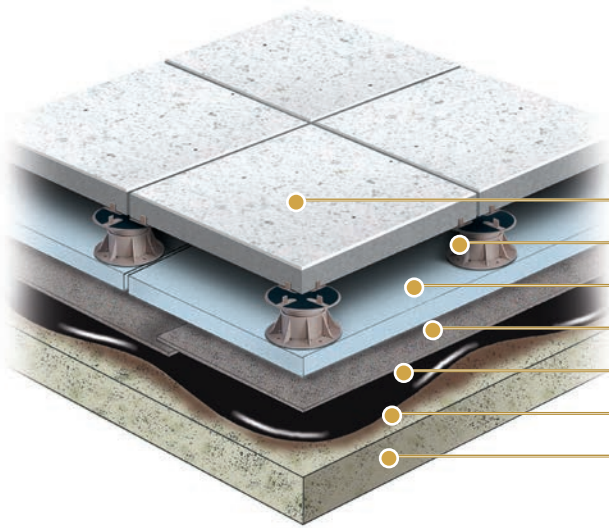
Hydrotech Hydroflex® 30

Hydrotech Monolithic Membrane 6125° (FR Assembly)

Hydrotech Surface Conditioner 56170

Approved Substrate

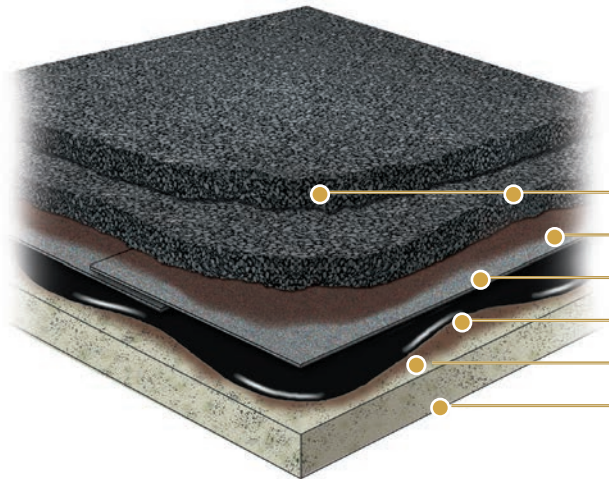




Under Pavers

Typical components depicted

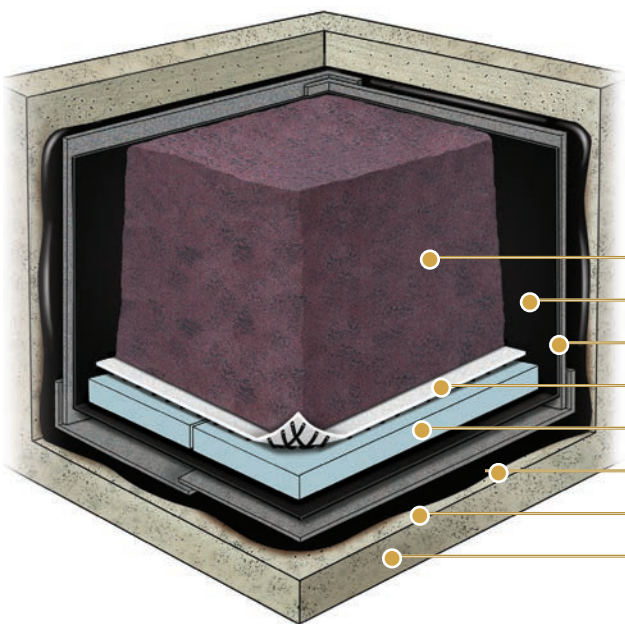
- Architectural Paver
- Pedestal
- Sika Approved 60 or 100 psi XPS Insulation
- Hydrotech Hydroflex® 30
- Hydrotech Monolithic Membrane 6125® (FR Assembly)
- Hydrotech Surface Conditioner 56170
- Approved Substrate



Asphalt Overlay

Typical components depicted

- Asphalt Paving Lift #1 and #2
- Non-Solvent Tack Coat
- Hydrotech Hydroflex® 30
- Hydrotech Monolithic Membrane 6125® (FR Assembly)
- Hydrotech Surface Conditioner 56170
- Approved Substrate



Planter

Typical components depicted

- Soil/ Approved growing media
- Sika Approved Anti-Root Protection Layer
- Hydrotech Hydroflex® 30
- SikaRoof Drainage Composite 5006H
- Sika Approved 60 or 100 psi XPS Insulation
- Hydrotech Monolithic Membrane 6125® (FR Assembly)
- Hydrotech Surface Conditioner 56170
- Approved Substrate

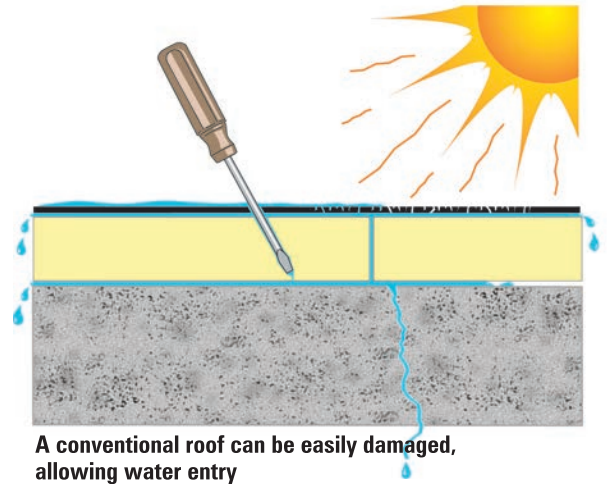
PROTECTED MEMBRANE ROOFING

CONVENTIONAL ROOFING DESIGN:

With a conventional roof assembly the roof membrane is typically placed on top of an insulation layer and structural deck. In this configuration the roof membrane is doing double duty...protecting the contents of the building as well as the insulation below from moisture. When most insulation gets wet it loses its ability to perform as a thermal barrier. And, because the roof membrane is fully exposed to the environment in this assembly, it is subjected to extreme conditions and stresses.

A conventional roof arrangement can leave the roof membrane vulnerable to sudden temperature changes, high summer roof temperatures, low winter temperatures, ice, hail, ultraviolet rays, physical abuse from heavy foot traffic and routine maintenance.

Exposure to all of these elements can weaken the integrity of the roof membrane and shorten its life expectancy.



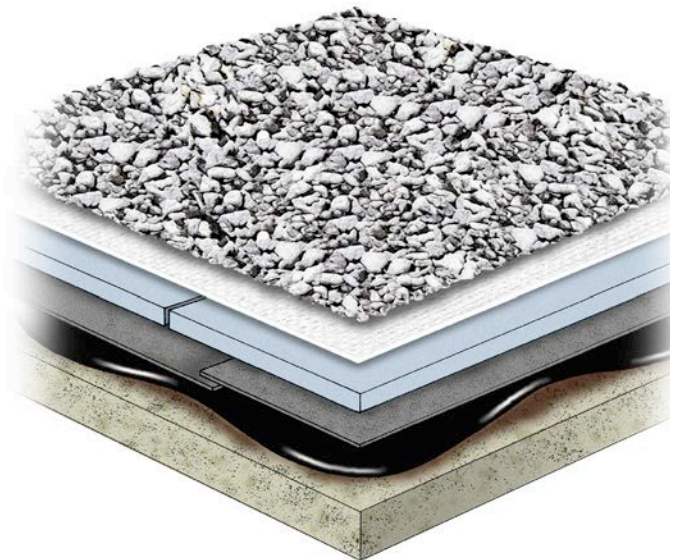
THERE IS A BETTER WAY - PROTECT THE MEMBRANE!

A better way is possible using a Sika approved 60 or 100 psi XPS Insulation layer - a closed cell extruded polystyrene that can be placed in a wet environment. Placed on top of Hydrotech's Monolithic Membrane 6125°, it offers protection from the harsh conditions up on a rooftop.

UNCONVENTIONAL COMMON SENSE IN ROOFING

This arrangement of roofing materials (roof deck / roof membrane / moisture-resistant insulation) has been referred to for decades as an Insulated Roof Membrane Assembly (IRMA), although it is now most often referred to as a Protected Membrane Roof (PMR). With such roofs, the membrane's temperature range and rate of temperature change are drastically reduced. Neither Mother Nature nor physical abuse can easily affect it.

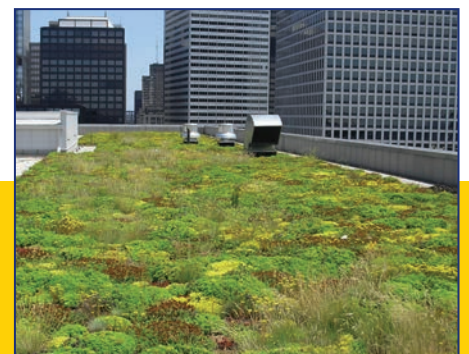
BY SIMPLY REVERSING THE INSULATION AND MEMBRANE PLACEMENT - INSULATION ON TOP OF THE MEMBRANE RATHER THAN BENEATH - THE CAUSE OF MANY ROOFING PROBLEMS CAN BE EASILY SOLVED.



South of Market - Reston, VA



7 World Trade Center - New York, NY



550 W. Adams - Chicago, IL

PROTECTED MEMBRANE ROOFING (PMR) ASSEMBLY BENEFITS:

Proven Performance – The PMR Assembly has been a proven, time tested roof assembly for 60 years, with thousands of successful installations around the world.

Total Roof Life Cost Savings – While the initial cost might be slightly greater, the life cycle cost of a PMR Assembly can be considerably less than that of a conventional roof, since it can last significantly longer...2-3 times longer!

Lower Maintenance Costs – Roof maintenance is minimal throughout the service life of a PMR Assembly.

Design Flexibility – A wide choice of topping materials and finishes installed over the membrane and insulation is possible to meet the desired roofs function.

No Vapor Retarder Needed – With the membrane located below the insulation (on its warm side) the dew point condition occurs above it, therefore no additional vapor retarder is required in a PMR Assembly.

Future Alterations – Since the insulation and other topping materials above the membrane are typically loose laid, the roof surface can be easily altered to suit a new roof function or aesthetic.

Reuse / Recycle Option – A truly sustainable roof provides the best performance for the longest time possible. When it's finally time to replace the roof, the Sika approved XPS Insulation can be either reused or recycled.

Other Work Can Proceed Faster – Since the MM6125 membrane is installed first (followed by the insulation and ballast), the interior build out can begin immediately.



AT&T Corporate Center - Chicago, IL

TYPICAL APPLICATIONS

Protected Membrane Roof (PMR)

Typical components depicted

Stone Ballast

Sika Geotextile-500 filter fabric

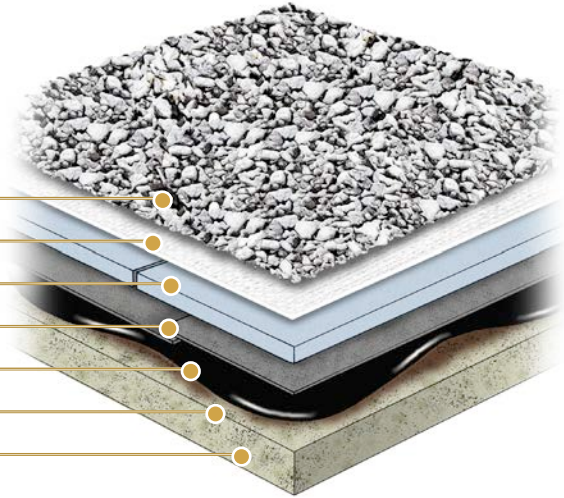
Sika Approved 60 or 100 psi XPS Insulation

Hydrotech Hydroflex® 30

Hydrotech Monolithic Membrane 6125® (FR Assembly)

Hydrotech Surface Conditioner 56170

Approved Substrate



PMR Metal Deck

Typical components depicted

Stone Ballast

Sika Geotextile-500 filter fabric

Sika Approved 60 or 100 psi XPS Insulation

Hydrotech Hydroflex® 30

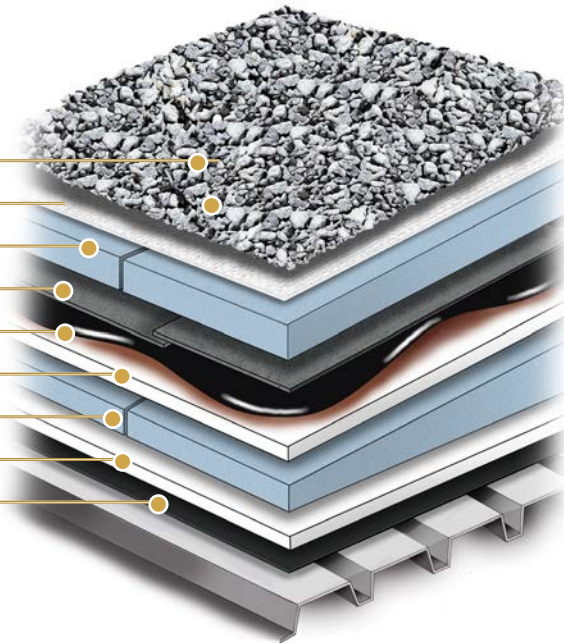
Hydrotech Monolithic Membrane 6125® (FR Assembly)

Approved Substrate Board

Tapered Insulation

Approved Substrate Board

Vapor Barrier (where needed)



Under Pavers

Typical components depicted

Architectural Paver

Spacer Tab

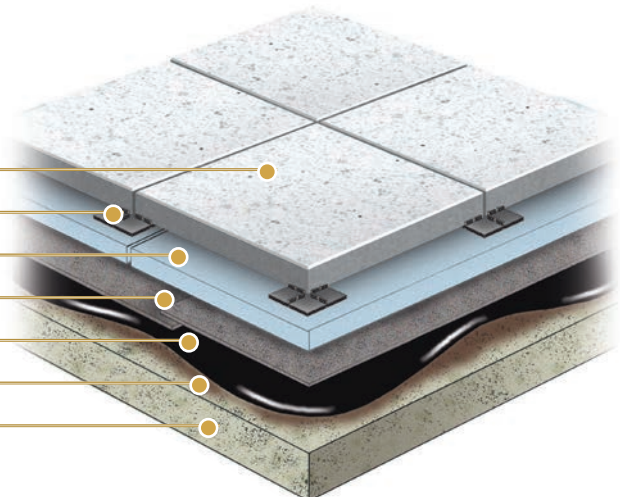
Sika Approved 60 or 100 psi XPS Insulation

Hydrotech Hydroflex® 30

Hydrotech Monolithic Membrane 6125® (FR Assembly)

Hydrotech Surface Conditioner 56170

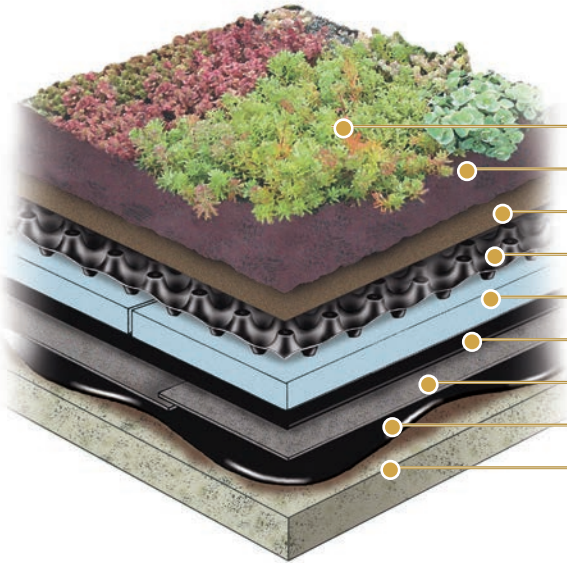
Approved Substrate



Not intended for vehicular traffic

Garden Roof® Assembly

Typical components depicted



Vegetation

Soil or approved Growing Media

Systemfilter

SikaRoof Drainage Composite 5006H

Sika Approved 60 or 100 psi XPS Insulation

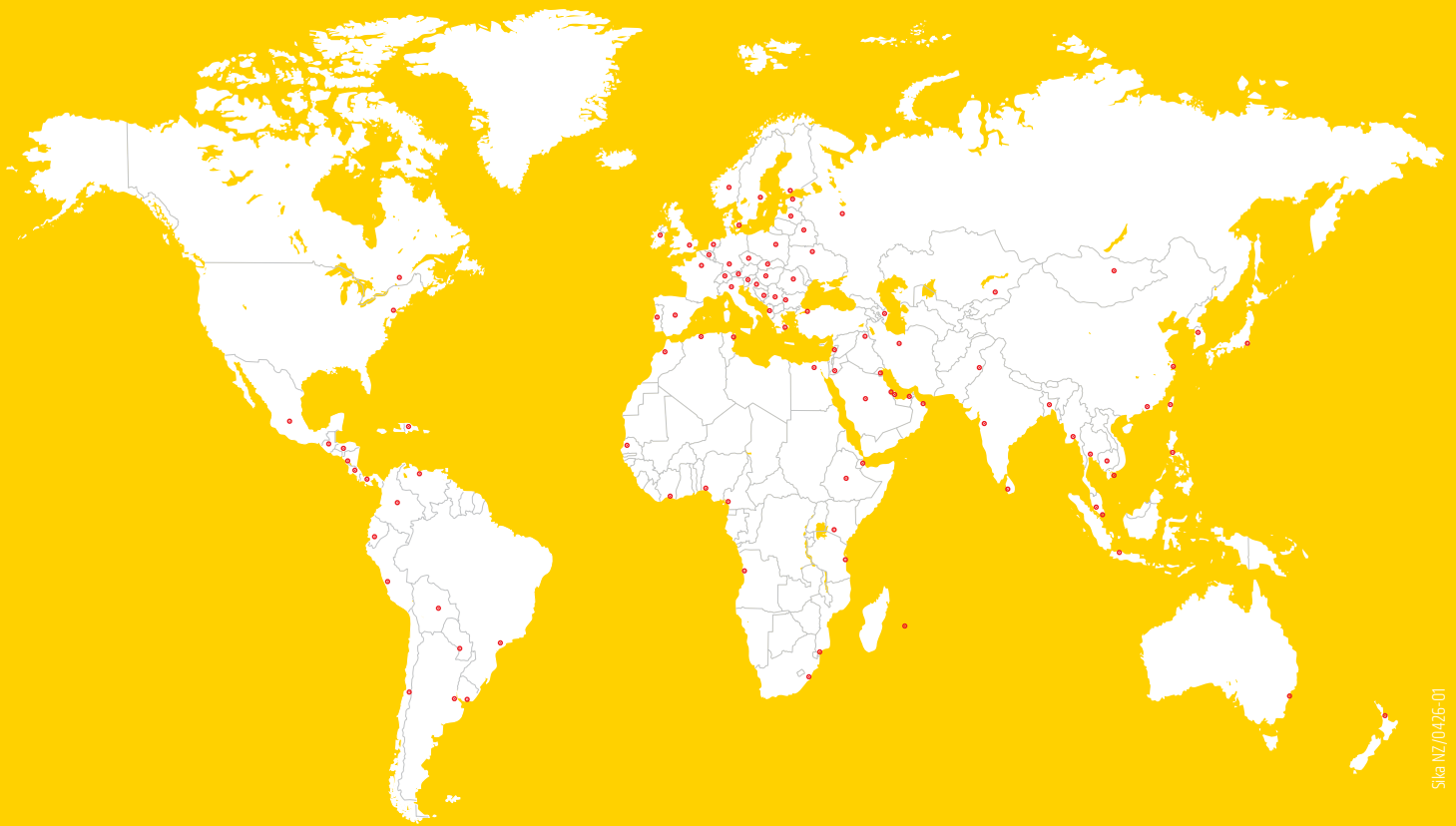
Sika Approved Anti-Root Protection Layer

Hydrotech Hydroflex 30°

Hydrotech Monolithic Membrane 6125° (FR Assembly)

Hydrotech Surface Conditioner 56170 Over Approved Substrate

GLOBAL BUT LOCAL PARTNERSHIP



Sika NZ/04/26-01

WE ARE SIKA

With more than 100 years of experience, Sika is a worldwide innovation and sustainability leader in the development and production of systems and products for commercial and residential construction, as well as the transportation, marine, automotive, and renewable energy manufacturing industries.

SIKA (NZ) LTD

PO Box 19192, Avondale, Auckland 1746, NZ

Ph: 0800 745 269

www.sika.co.nz

BUILDING TRUST

