



Auckland International Airport Transport Hub

# SIKA AT WORK

## AUCKLAND INTERNATIONAL AIRPORT TRANSPORT HUB, NZ

MECHANICALLY-FIXED  
WARM ROOF SYSTEM

BUILDING TRUST



# AUCKLAND INTERNATIONAL AIRPORT TRANSPORT HUB, NZ



2,500m<sup>2</sup> of installed Sika Sarnafil sheet roofing membrane (Sika Warm Roof System)

## PROJECT DESCRIPTION

As part of Auckland International Airport's transformational infrastructure programme, a new transport hub was proposed and designed to accommodate more travellers, with more convenience and with environmental consideration.

## PROJECT REQUIREMENT

Situated on the western end of the new hub is an office building, the roof of which required complete and durable water-tightness. As part of the roofing membrane system build-up, additional insulation properties and lightweight design would allow the building to be constructed without the excessive weight and loading of conventional construction materials.

## CHALLENGES

Of utmost importance to Auckland International Airport Ltd was the ability to maintain 'business as usual' with as little disruption as possible. This meant keeping a tight perimeter on construction activity and precision delivery schedules - both to ground and roof level.

Weather at the time of construction (May to September) was traditionally inclement, so the mechanically-fixed aspect of the Sarnafil warm roof membrane system surmounted this challenge when other methods required dry application conditions.

## PROJECT SIZE

2,500 m<sup>2</sup>

## SIKA SOLUTION

### Roofing

Sika® Sarnafil mechanically fixed sheet membrane system.

## PRODUCTS USED

Sika® Sarnafil S-327 20 L membrane  
Sika® EJOT EcoTec telescopic fastener system  
Sarnafil®-130 S-felt separation layer  
Sarnatherm® EPS insulation, tapered to falls  
Sarnavap®-5800 SA self-adhered vapour control layer  
Sarnacol®-808/Sarnacol®-2170 adhesives

## PROJECT PARTICIPANTS

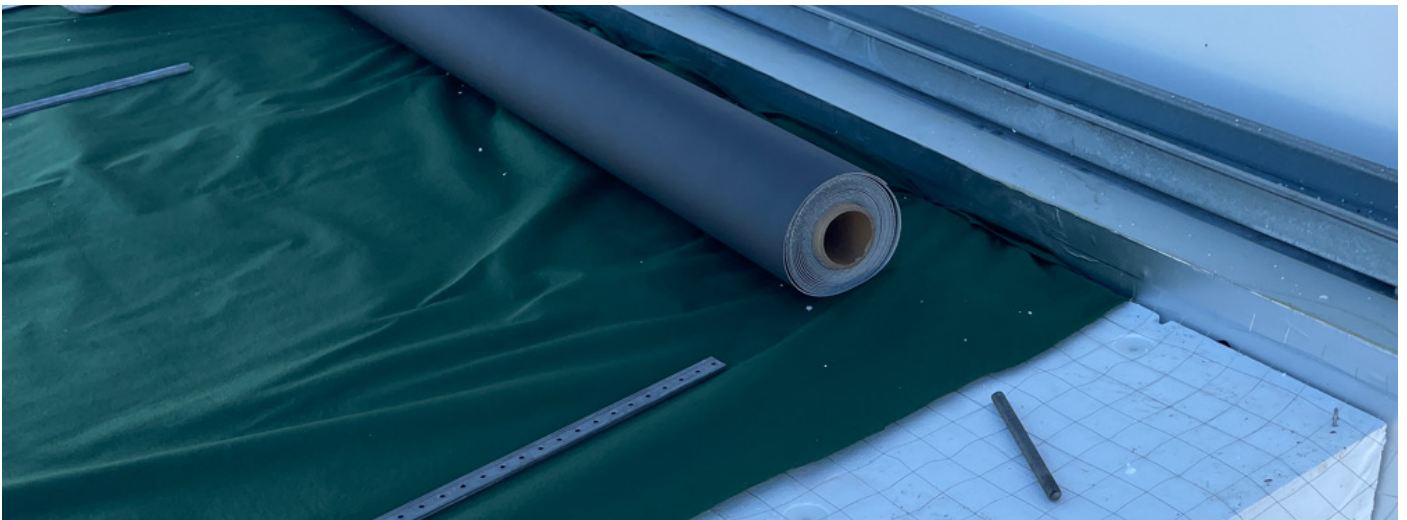
Product Specifier:	PeddleThorp Architects
Main Contractor:	Icon Construction
Specialist Contractor:	Asphaltec Ltd



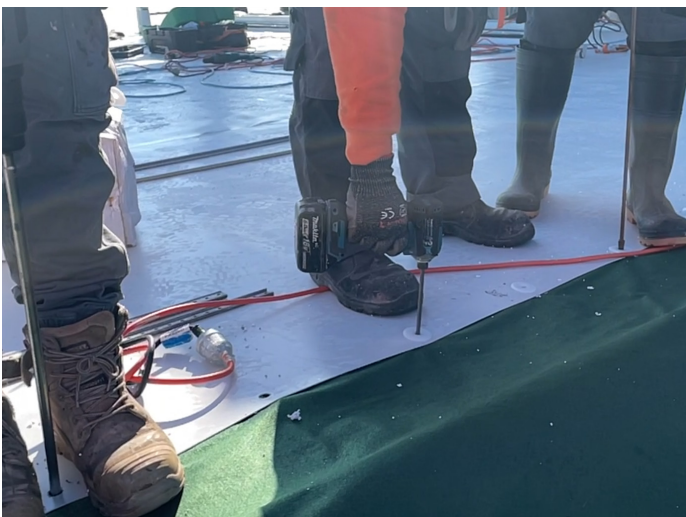
Scan QR Code for more information



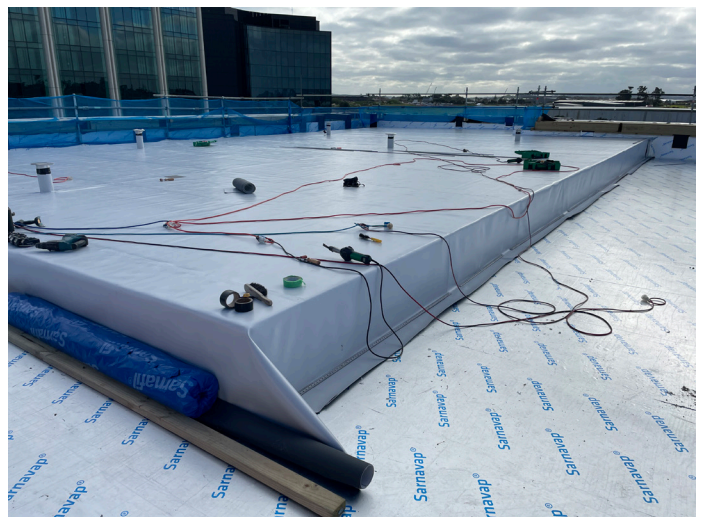
Sarnavap-5800 SA vapour barrier applied to the flat concrete substrate.



Sarnatherm EPS NZ tapered insulation boards, specified electronic leak detection, Sarnafil-130 S-Felt and rolls of Sarnafil S-327 20 L being arranged in place.



Teamwork makes the dream work! Asphalttec making the installation of the Sika Eject Ecotek telescopic fasteners a breeze.



A completed section of the Sika Warm Roof system, awaiting connection to adjacent areas.

**Sika (NZ) Ltd**  
Po Box 19192  
Avondale · Auckland  
New Zealand · 1746

**Contact**  
Phone 0800 745 269  
[www.sika.co.nz](http://www.sika.co.nz)

**BUILDING TRUST**

