

WATERPROOFING SORTED FROM BASEMENT TO ROOF

TORCH-ON MEMBRANE

- INDEX®

WINDOW AIRSEAL & CONTROL JOINTS

- Sikaflex® MS
- Sikaflex® AT-Facade or
- SikaHyflex®-250 Facade
- Sika WindowTape One
- Sika ExpansionTape-600

WATERPROOFING WINDOW REVEAL

- Sikalastic®-152

BASEMENT JOINTS

- STITCH JOINTS
- Sika MonoTop®-438 R
- JOINT SEALANT
- Sikaflex®-Tank N
- JOINT SEALANT
- SikaSwell® Profile
 - SikaSwell® S2

BASEMENT MEMBRANE

- SikaProof® A
- SikaProof® Bentonite
- Sika BlackSeal® SB

ROOF MEMBRANE

- SikaRoof® MTC or
- Sarnafil®

BALCONY

- Sikafloor® 400 N
- Sikalastic®-152

BALCONY OVER LIVING SPACE

- Sarnafil®
- SikaRoof® MTC

EXTERNAL CONCRETE PROTECTION

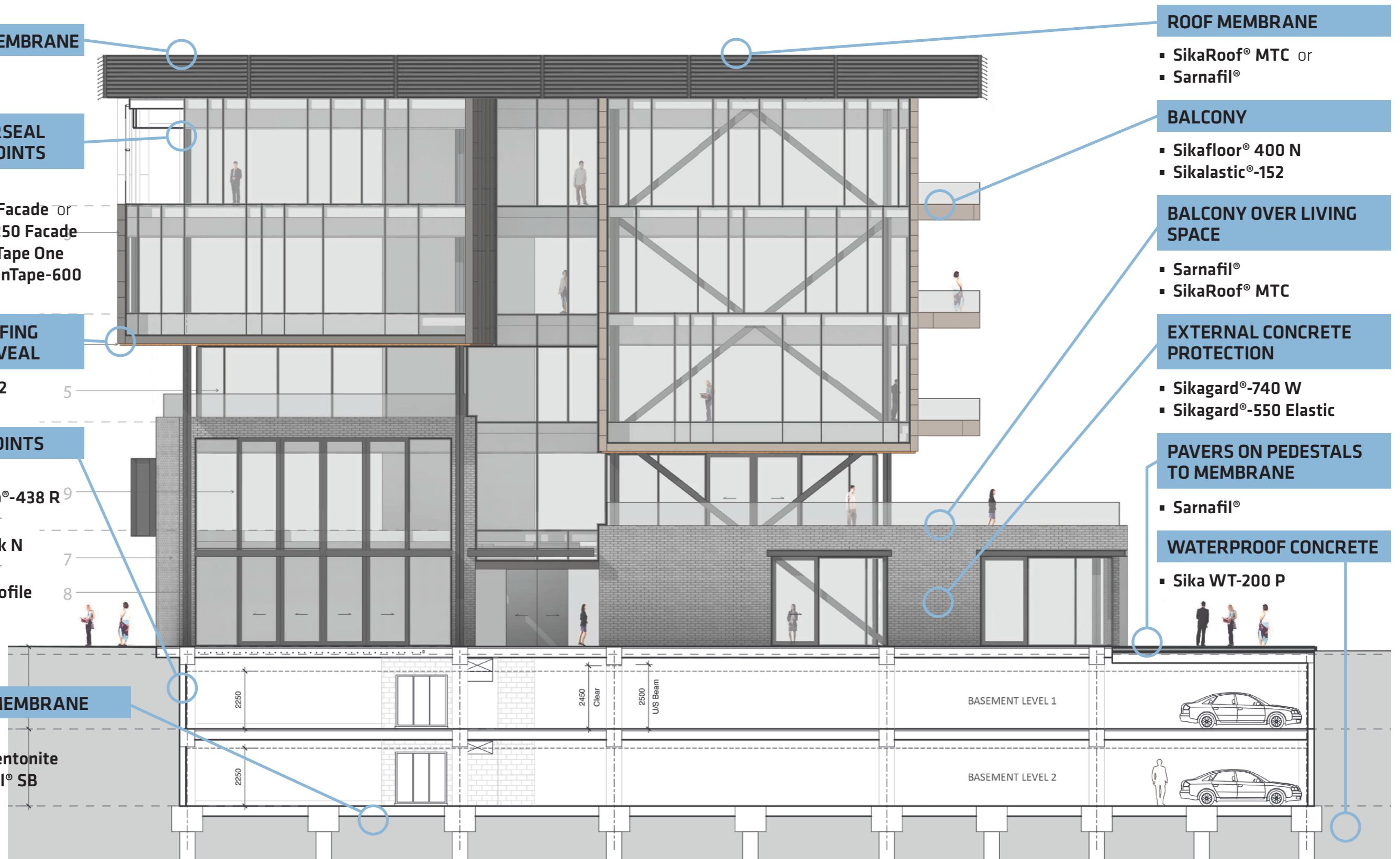
- Sikagard®-740 W
- Sikagard®-550 Elastic

PAVERS ON PEDESTALS TO MEMBRANE

- Sarnafil®

WATERPROOF CONCRETE

- Sika WT-200 P



To reduce risk and gain performance certainty, construction waterproofing needs to be considered early, and specified as a complete and compatible system from basement to roof.