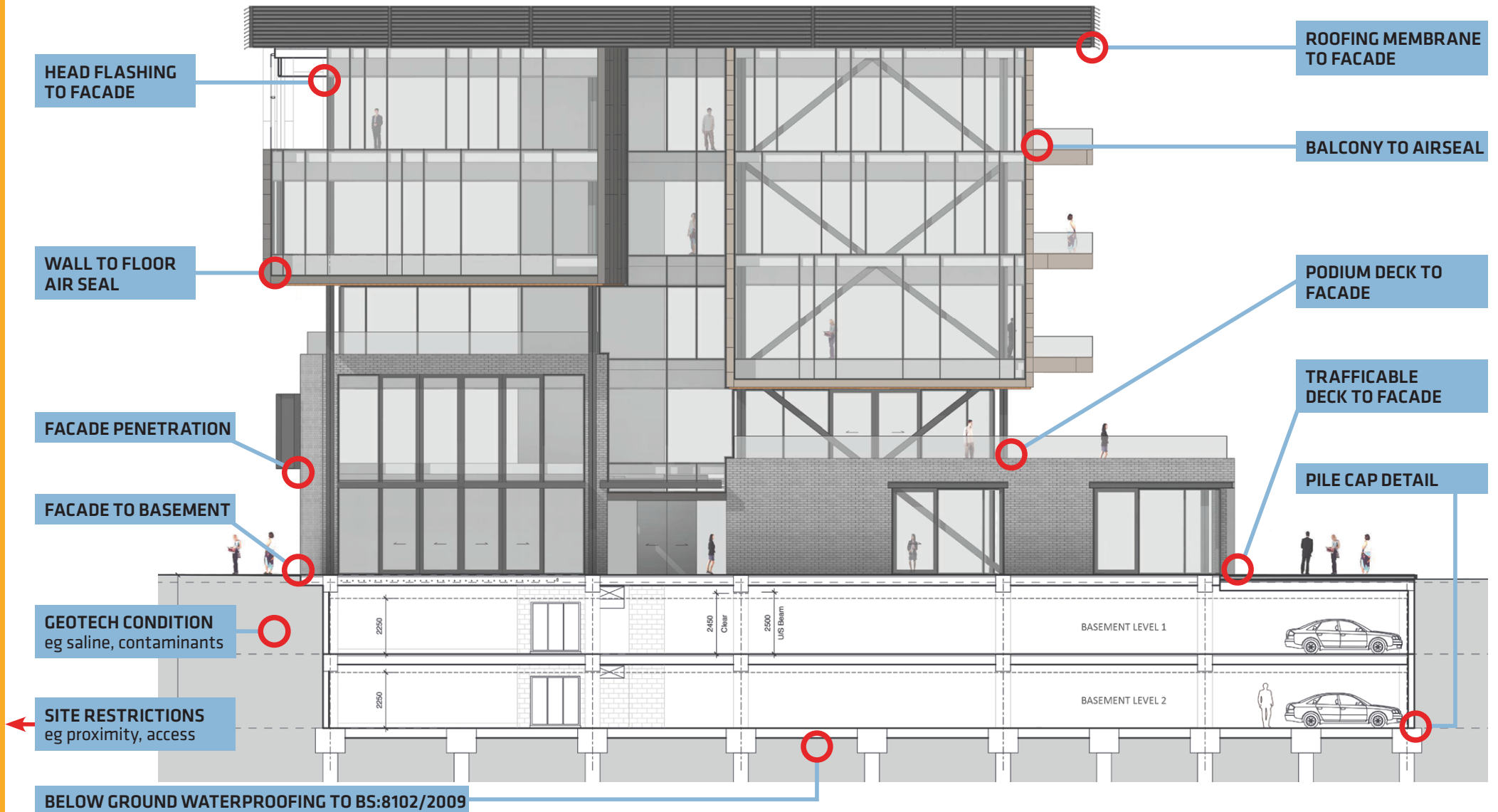


THE CRITICAL AREAS OF WATERPROOFING



These are the most common areas where waterproofing can fail.

To reduce the risk, follow these 4 rules:

- 1 Get expert input early - Sika has 110 years of global waterproofing experience
- 2 Waterproofing should be continuous - think basement to roof, not bit by bit
- 3 Compatibility and quality are crucial
- 4 Ask for a free, no obligation Sika Waterproofing Brief



Contact Sika on **0800 SIKA NZ** or scan for more info

BUILDING TRUST

